


HIGHSTEP
SYSTEMS



**THE FALL
PROTECTION SYSTEM
OF THE FUTURE.**



**WE WILL TAKE YOU
TO UNIMAGINABLE
HEIGHTS SAFELY AND
COMFORTABLY.**



HighStep Systems AG offers a unique fall protection system for safe, efficient and ergonomic access to hard to reach locations up high and down low.

Our mission

Is to automate climbing on hard-to-reach workplaces through innovative and pioneering products that enable each of our customers to increase their safety at work and boost their productivity.

Our products

Constant innovation and the highest quality of standards push us to develop the best and most reliable products for our customers. All products are always compatible with the rail. The HighStep fall protection system consists of two different components, the aluminium rail as the system support and your choice of climbing equipment: the HighStep Easy and the HighStep Lift.



THE WORLD'S FIRST CLIMBING LIFT



Certified by TÜV Munich

Our commitment to producing high-quality climbing protection systems is confirmed by extensive certificates.

Innovation from Switzerland

HighStep Systems relies on technological precision and ergonomic efficiency to develop products that both protect health and increase work efficiency.

Unrivaled safety standard

The HighStep Lift sets fundamentally new standards in terms of climbing protection systems and opens up completely new possibilities.



Applications

There is a vast number of hard to access work areas around the world, whether they are high up or down low. Every day professionals must reach these areas at a high risk. The innovative High-Step fall protection system makes the access extremely safe and efficient, and it is suitable for a variety of applications.



Copyright MIAS - A project by Volkswagen AG Zwickau
implemented with MIAS and HighStep Systems AG



Power grids

Overhead line or power poles are ideally suited for equipping with the HighStep system, regardless of the design of the pole.



Industry and infrastructure

For industrial plants and buildings, the system provides safe access for chimneys, facades or high building elements.



Wind power

New and existing wind turbines can be easily equipped and retrofitted with the HighStep system.



Shelf operating devices

The system enables easy and safe access. Maintenance-free rails and ergonomic access equipment ensure employee safety and smooth work processes.



Telecom / transmission masts

Regular maintenance and repair-work on telecommunications systems as well as transmission or mobile radio towers can be optimized with the HighStep System.



Cable car

Safe access to cable car masts is made possible by the system. It is maintenance-free and prevents unauthorized access.



Advantages

Safe, versatile, efficient, ergonomic, comfortable, robust, maintenance- free – the HighStep fall protection system offers our customers and users significant added value in all aspects.



Safety and security

HighStep offers the user maximum fall safety. The user is permanently and repeatedly secured to the rail with his climbing device. Once attached to the rail, one cannot slip or fall.



Maintenance-free

The HighStep rail is maintenance-free. The maintenance-free feature includes the rail, rail connecting profiles, spring clips and all mounting parts. This means that regular checks are no longer necessary after installation on the structure.



Cost-effectiveness

HighStep offers outstanding cost-effectiveness over the entire service life of the climbing system. In addition to the initial investment, it is the low long-term follow-up costs (free of maintenance) and the benefits (time saving during climbing, long-term operational capability of the workforce) that make the system so economical.



Future-oriented technology

The HighStep rail remains forever unchangeable. Devices available today will run on all rails – and new generations of devices will run in today's rail. In addition, these devices will always take on new tasks and functions.

HighStep Protector

Climbing on the rail is always done in conjunction with the independent fall protection device, the HighStep Protector. This serves as a moving safety element and third safety point on the rail.



The fall protection runner

The rail is always climbed in conjunction with the independent fall protection, the HighStep Protector. This serves as a concurrent protection and third anchor to the rail.



Maximum safety

In the event of sudden downward movement, the Protector locks onto the rail, making a fall impossible. Combining the HighStep Easy and Protector minimises the fall and the built-in shock absorber ensures maximum safety.



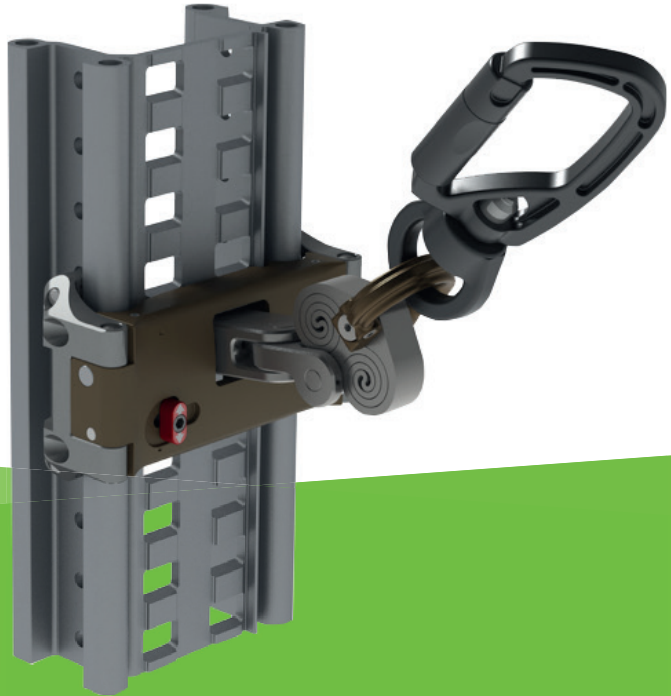
Excellent running characteristics

Multiple rollers on all sides and being optimally aligned with the rail make the Protector particularly smooth running. The smart design prevents accidental hooking and allows an extremely comfortable and safe climb.



Built-in anchorage point

The Protector is the only safety running of its type to secure to an anchorage point with a single movement in an emergency. It is approved for two people according to EN 795 B.



Technical Data

Max. payload	150 kg
Weight	700 g
Inspection	Every 12 months
Applied standards	EN 353-1: 2014 + A1:2017 EN 795/B:2012 and CEN/TS 16415:2013
Special advantages	Approved as anchorage point for rescuing two persons

HighStep Easy

The ergonomic climbing system – as easy as climbing stairs, but much safer.



Climbing on mobile pedals

The base model for climbing is the HighStep Easy, consisting of two separate pedals. Hook the pedals onto the rail to climb, the binding will fix the user's foot to the pedal.



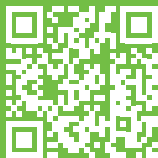
Safety redefined

The pedal fixes to the foot of the rail, reliably preventing any falls, as it is impossible to miss the footing and even an accidental slip.



Ergonomic climbing

The user is always climbing completely upright and can choose the vertical step, the motion sequence is similar to climbing stairs. The pedals can further be used as rests and work platforms.



Technical Data

Max. payload	150 kg
Weight per pedal	2.2 kg
Inspection	Every 12 months
Applied standards	Directive 2006/42/EC
Special advantages	Built-in rest

HighStep Systems AG offers a unique fall protection system for safe, efficient and ergonomic access on hard to reach locations up high and down low.



HighStep Systems AG | Silberstrasse 10 | 8953 Dietikon | Schweiz
Telefon +41 44 371 44 33 | info@highstepsystems.com

www.highstepsystems.com

