

HIGHSTEP


SYSTEMS



**THE FALL
PROTECTION SYSTEM
OF THE FUTURE.**



**WE WILL TAKE YOU
TO UNIMAGINABLE
HEIGHTS SAFELY AND
COMFORTABLY.**



HighStep Systems AG offers a unique fall protection system for safe, efficient and ergonomic access to hard to reach locations up high and down low.

Our mission

Is to automate climbing on hard-to-reach workplaces through innovative and pioneering products that enable each of our customers to increase their safety at work and boost their productivity.

Our products

Constant innovation and the highest quality of standards push us to develop the best and most reliable products for our customers. All products are always compatible with the rail. The HighStep fall protection system consists of two different components, the aluminium rail as the system support and your choice of climbing equipment: the HighStep Easy and the HighStep Lift.



THE WORLD'S FIRST CLIMBING LIFT



Certified by TÜV Munich

Our commitment to producing high-quality climbing protection systems is confirmed by extensive certificates.

Innovation from Switzerland

HighStep Systems relies on technological precision and ergonomic efficiency to develop products that both protect health and increase work efficiency.

Unrivaled safety standard

The HighStep Lift sets fundamentally new standards in terms of climbing protection systems and opens up completely new possibilities.



Applications

There is a vast number of hard to access work areas around the world, whether they are high up or down low. Every day professionals must reach these areas at a high risk. The innovative High-Step fall protection system makes the access extremely safe and efficient, and it is suitable for a variety of applications.



Copyright MIAS - A project by Volkswagen AG Zwickau
implemented with MIAS and HighStep Systems AG



Power grids

Overhead line or power poles are ideally suited for equipping with the HighStep system, regardless of the design of the pole.



Industry and infrastructure

For industrial plants and buildings, the system provides safe access for chimneys, facades or high building elements.



Wind power

New and existing wind turbines can be easily equipped and retrofitted with the HighStep system.



Shelf operating devices

The system enables easy and safe access. Maintenance-free rails and ergonomic access equipment ensure employee safety and smooth work processes.



Telecom / transmission masts

Regular maintenance and repair-work on telecommunications systems as well as transmission or mobile radio towers can be optimized with the HighStep System.



Cable car

Safe access to cable car masts is made possible by the system. It is maintenance-free and prevents unauthorized access.



Advantages

Safe, versatile, efficient, ergonomic, comfortable, robust, maintenance- free – the HighStep fall protection system offers our customers and users significant added value in all aspects.



Safety and security

HighStep offers the user maximum fall safety. The user is permanently and repeatedly secured to the rail with his climbing device. Once attached to the rail, one cannot slip or fall.



Maintenance-free

The HighStep rail is maintenance-free. The maintenance-free feature includes the rail, rail connecting profiles, spring clips and all mounting parts. This means that regular checks are no longer necessary after installation on the structure.



Cost-effectiveness

HighStep offers outstanding cost-effectiveness over the entire service life of the climbing system. In addition to the initial investment, it is the low long-term follow-up costs (free of maintenance) and the benefits (time saving during climbing, long-term operational capability of the workforce) that make the system so economical.



Future-oriented technology

The HighStep rail remains forever unchangeable. Devices available today will run on all rails – and new generations of devices will run in today's rail. In addition, these devices will always take on new tasks and functions.

The HighStep Rail

The system support with maintenance-free rail: easy to install, durable and extremely resilient.



The system support

The standardised aluminium rail serves as the base for the system. It is easy to install and permanently fixed to many different structures.



Maintenance-free rail

The HighStep rail remains maintenance-free for its entire service life due to the design and being classified as a part of machinery. The anodised surface offers additional protection from severe environmental conditions.



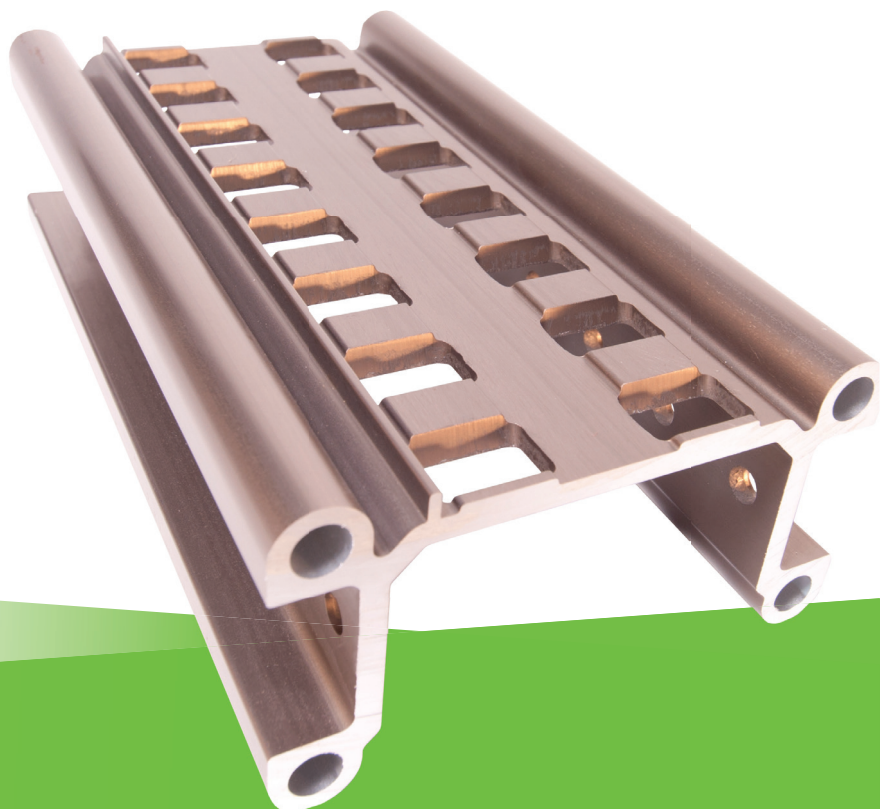
High strength

The rail is high strength and only needs to be anchored to the structure on average every three metres. This gives the client new options and maximum flexibility in implementing projects.



Flexible and easy installation

The HighStep rail is extremely easy to install and can be used regardless of the structure material or shape. The rail can be bent and can be adapted to the structure's shape on site. This reduces the preparation required for installation compared to conventional climbing systems considerably.



Technical Data

Material	Aluminium
Corrosion protection	Eloxal and offshore coating
Rail section length (standard)	6 metres
Max. payload	3.4 kg per m
Strength	5 t per rail segment
Minimum bending radius	15 m
Applied standards	Directive 2006/42/EC
Special advantages	Maintenance-free for life

HighStep Systems AG offers a unique fall protection system for safe, efficient and ergonomic access on hard to reach locations up high and down low.



HighStep Systems AG | Silberstrasse 10 | 8953 Dietikon | Schweiz
Telefon +41 44 371 44 33 | info@highstepsystems.com

www.highstepsystems.com

